



**Offshore / Onshore Marine Gangways Walk to Work Systems  
Vessel Access Bespoke Access Accommodation Ladders**



Benbecula Group - Walker Site,  
Wincomblee Road, Walker, Newcastle upon Tyne, NE6 3QS  
Tel: +44 (0)191 262 3657  
Email: [info@tynegangway.com](mailto:info@tynegangway.com)  
Website: [www.tynegangway.com](http://www.tynegangway.com)



# Introduction

**T**yne Gangway is a world leader in the design and manufacture of marine access systems, including aluminium gangways, accommodation ladders, shore based pedestrian access equipment and special structures. Established in 1934 Tyne Gangway has an extensive heritage in the manufacture of gangways and is the only business of its kind in the UK. The business prides itself on it's excellent customer service and exceptional on time delivery to a worldwide customer base. All Tyne Gangway products are manufactured within their recognised DNV-GL welding shop complete with ISO 9001:2015 and EN1090 certification.



Stay in touch via social media

[@tynegangway](#)

[company/tyne-gangway](#)



**Tyne Gangway was established in 1934 when most of the world's marine access equipment was manufactured from selected hardwood and built by skilled carpenters.**

In the 1950's aluminium gangways were introduced to the market; the construction was aluminium angle and plate with rivetted connections.

In the 1960's Tyne Gangway were pioneers in the introduction of lightweight aluminium alloys for manufacturing their gangways.

Their reputation grew and at one point they were the largest supplier of gangways in the world. Boasting in 1965 that they had supplied gangways and accommodation ladders to 78% of the ships completed in the UK.

In 1978 British Standards were introduced for the manufacturing and supply of aluminium gangways.

In the early 1980's the company introduced welding. Today Tyne Gangway weld in their DNV-GL weld shop using the latest synergic pulse machines which offer superior quality and high performance.

In 2016 Tyne Gangway received Type Approval for their Shala and Sala range of gangways.



## Benbecula Group

In October 2017 Tyne Gangway, became part of Benbecula Group, a privately funded group of companies based in Newcastle Upon Tyne.

The move greatly strengthens the portfolio via its new sister companies Lift-Rite Engineering Services, Cylinder Service Centre and TyneTec Engineering, all of whom serve the offshore, marine and land based engineering sectors.

The Benbecula Group was formed to enable a select group of companies to integrate their specific industry skills and

individual strengths to become trusted, specialist partners of choice through an organic and acquisitive growth plan.

The group is recognised by service quality and measured by on-time delivery which fits perfectly with the ethos of Tyne Gangway.

[www.benbeculagroup.com](http://www.benbeculagroup.com)



## Offshore & Wind Energy

Windfarms require maintenance and access, Tyne Gangway design and manufacture Telescopic Gangways to enable access from a Jack Up Vessel to the foundations of the Wind Turbines. The telescopic gangway reduces storage space on the vessel when not in use and allows safe access/ egress for the maintenance and installation for the Wind Turbine industry offshore.

## Shipbuilding & Shipyards

Tyne Gangway provide gangways and access equipment for use in ship yards and ship building industries to ensure safe access/ egress for the work force.

## Ports & Harbours

Tyne Gangway provide various designs of gangways for ports and harbours, to accommodate operating angles 0 – 30° and 0-50°, varying from static access to self-levelling treads for safe access and egress.

## Cruise Industry

Our self-levelling step access gangways are regarded as one of the best systems in the UK for safe passenger access to the cruise liners, these systems can also be fitted with disabled access ramps ensuring the passengers safe access/ egress when the cruise liner is in port.

## Defence

Tyne Gangway provide multiple variants of access equipment to both land and sea defence manufacturers, these ensure the work force have safe access/ egress during the build phase of the equipment.



## Background

### Pages 2-5

History  
Sectors  
Services

## Access Systems

- 6** Telescopic Gangways and  
Wind Turbine Access
- 8** Modular Gangways
- 10** Onshore and Offshore  
Gangways and Bridges
- 12** Self-Levelling stepped  
Gangways
- 14** Marine Column and Tower  
Gangways
- 16** Dolphin Access Gangways
- 17** Pontoon Access Gangways
- 18** Carousel Access
- 20** Accommodation Ladders
- 21** Naval Brows
- 22** Shore Type A
- 23** Type C
- 24** SHALA
- 25** SALA
- 26** Bulwark Ladders
- 27** Accessories
- 28** Bespoke Marine Access



Tyne Gangway offer our clients a full range of services, including Site Surveys, Design and Fabrication, Installation, Inspection, Certification and Operator Training.

We have the capability to visit site and survey to ensure the specifications of the client are met. We can arrange on site inspection surveys and witnessing of load tests, this can be arranged in the presence of a class surveyor.

We have the capability to arrange on site repairs if the equipment cannot be brought back to our facility.

Our current team have over thirty years' experience providing engineering solutions for our client's marine access requirements. This follows on from the original founder's mission and objectives back in 1934, 'To provide an essential and professional service to all clients old and new'.

## Fabrication

Tyne Gangway provides a in house solution to meet the client's needs, the workshop staff ensure that deadlines are met and in many cases expectations are exceeded. Tyne Gangway provide a full fabrication and welding capability, we employ time served fabricators and welders. The workshop is equipped with the latest synergic MIG welding equipment, this assist in producing higher quality welds and demonstrates less potential for defects.

Tyne Gangway are qualified to EN 1090 factory production controls, this assists the organisation to control materials and consumables from approved suppliers. Manufacturing is enabled by our design team producing 2D and 3D drawing packages, allowing the fabrication and design teams to visualise the product. Detailed drawings are released to the workshop after client approval. Tyne Gangway have a structured apprenticeship programme to encourage new workers to join the organisation. The apprentices complete a four-year apprenticeship with an additional improvers year to ensure the skills are of the required standard. This includes day release to college to enhance their knowledge and experience in manufacturing theory, this is then applied to the workplace.



## Gangway Inspections and Site Surveys

Generally, all gangways should of course be fit for purpose before every use but should have a documented visual inspection on an annual basis and should be load tested every five years.

Lift-Rite Engineering Services, also part of The Benbecula Group, employ service engineers who are LEEA trained, offshore certified and hold NDE operation certificates. Tyne Gangway or Lift-Rite dedicated engineers will carry out surveys and re-certification of marine gangways to ensure compliance.

If required, additional third party

verification can be organised for survey and load test re-certification. Surveys, Load Tests and re-certification can take place in situ however, major mechanical repairs will be carried out at our Tyne and Wear facility or at the facility of one of our international partners, if required, for overseas works. This will include a load test once the equipment is repaired to prove the repair is to the appropriate standard. Whilst carrying out the survey the inspector checks the integrity of the equipment, ensuring that there is no visual damage to the structure. The load test proves the equipment is fit for the design load and if it passes it is safe to use, and can be visually inspected annually. Re-certification of aged equipment can



### Testimonial

**“Fantastic products and great service. All their products can be tailor made to what the customer needs – nothing is too difficult. Past orders have always been competitively priced , high quality and delivered on time. After sales is excellent.”**

Duncan Wilson - Marine Director  
MPI Offshore Ltd

be carried out at Tyne Gangway, if your equipment has not been inspected or load tested in line with regulations, Tyne Gangway will carry out a full service, repair

## Gangway Repair and Maintenance

Tyne Gangway offers asset management services through the after-sales service department to ensure client investments are maintained and inspected in accordance with international standards.

Tyne Gangway offer a repair and replacement service for existing accommodation ladders; it can adapt its own design extrusions to replace existing access equipment to avoid expensive installation costs.

Tyne Gangway offer a range of replacement parts for their equipment. We carry a vast range of spares on the shelf, therefore offering a fast turn around when a spare part is needed.

Tyne Gangway equipment is designed to be robust and require minimal maintenance, historically there is equipment that has been in service for thirty plus years.



# Telescopic Gangways and Wind Turbine Access







## Specification

Aluminium lightweight gangways designed for variable length applications. 600 mm clear width and 0-50 degrees working angle. Steel foundation tower for access from the vessel

### Standard supply:

- Manufactured from Marine Grade Lightweight Aluminium 6082 T6
- 600mm clear width
- Length to suit customer requirements
- Anti-slip surface
- 0° to 50° working angle options
- Fixed handrail with half-height.
- Steel foundation connection tower for access from vessel
- Lifting points for installation
- Crane deployment connection hook

### Optional Supply:

- Customer specific foundation connections
- Electric, hydraulic or winch driven options
- Stowage post for vessel storage

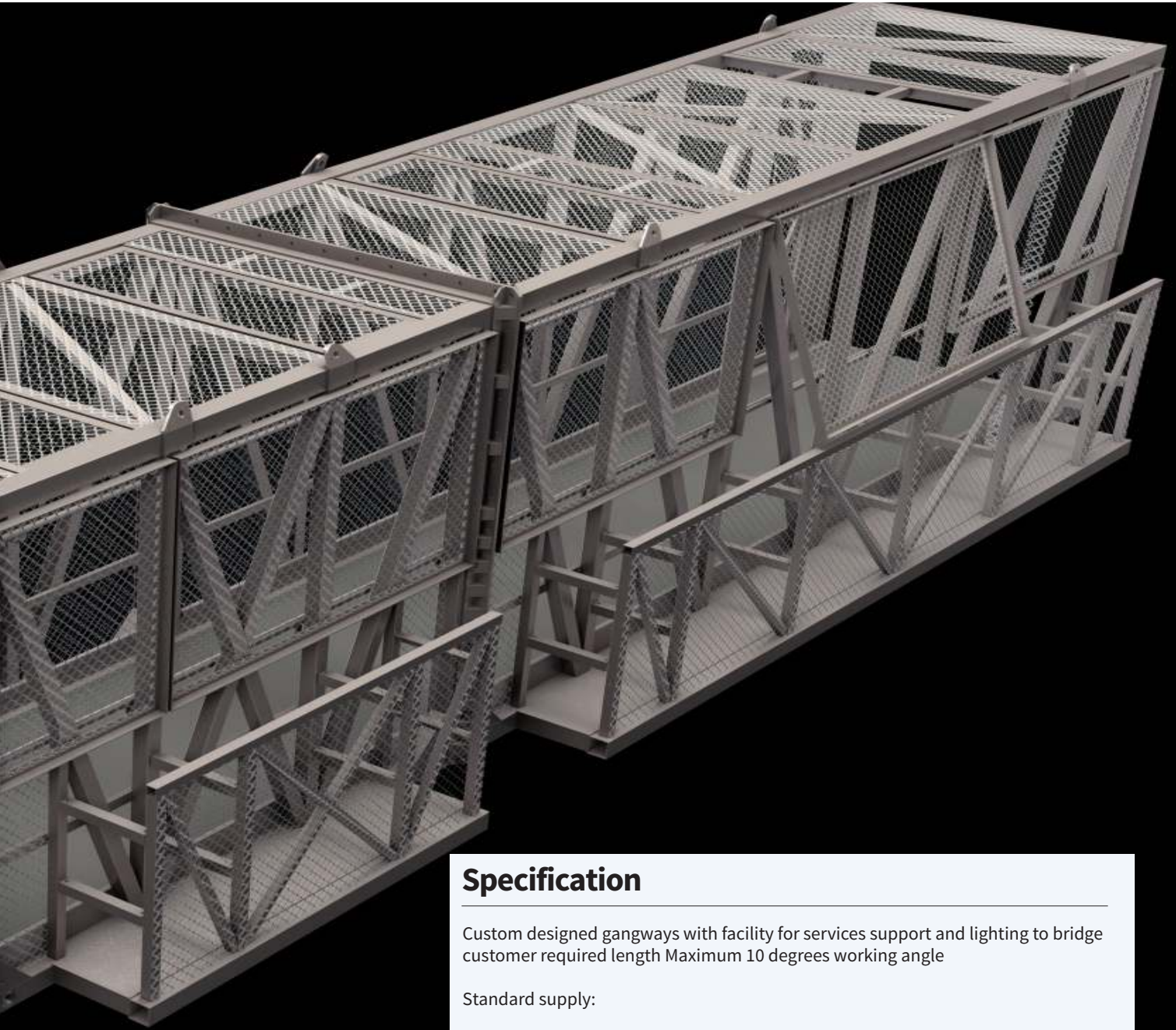




# Modular Gangways







## Specification

Custom designed gangways with facility for services support and lighting to bridge customer required length Maximum 10 degrees working angle

### Standard supply:

- Manufactured from Marine Grade Lightweight Aluminium 6082 T6
- Clear width to suit customer/ gangway requirement
- Optional lengths to suit customer requirement
- 4 Point fixed or multi-bolt flange connection
- Overhead braced structure fully enclosed with mesh panels
- Anti-slip surface for maximum 10 degrees operating angle
- Fixed handrail with half-height.
- Multi-position wheels
- Underside wear pads for gangway protection
- Lifting points for installation and assembly.

### Optional Supply:

- Provision for external services storage with access panels
- Customer specific foundation connections
- Lighting, sprinkler system provisions for customer pipework, services, etc.
- Safety gates & RFID detection
- Multi-access gates

# Onshore and Offshore Gangways and Bridges



## Specification

Overhead braced structure providing complete security between two points. Up to 50m in length with width to suit customer needs

### Standard supply:

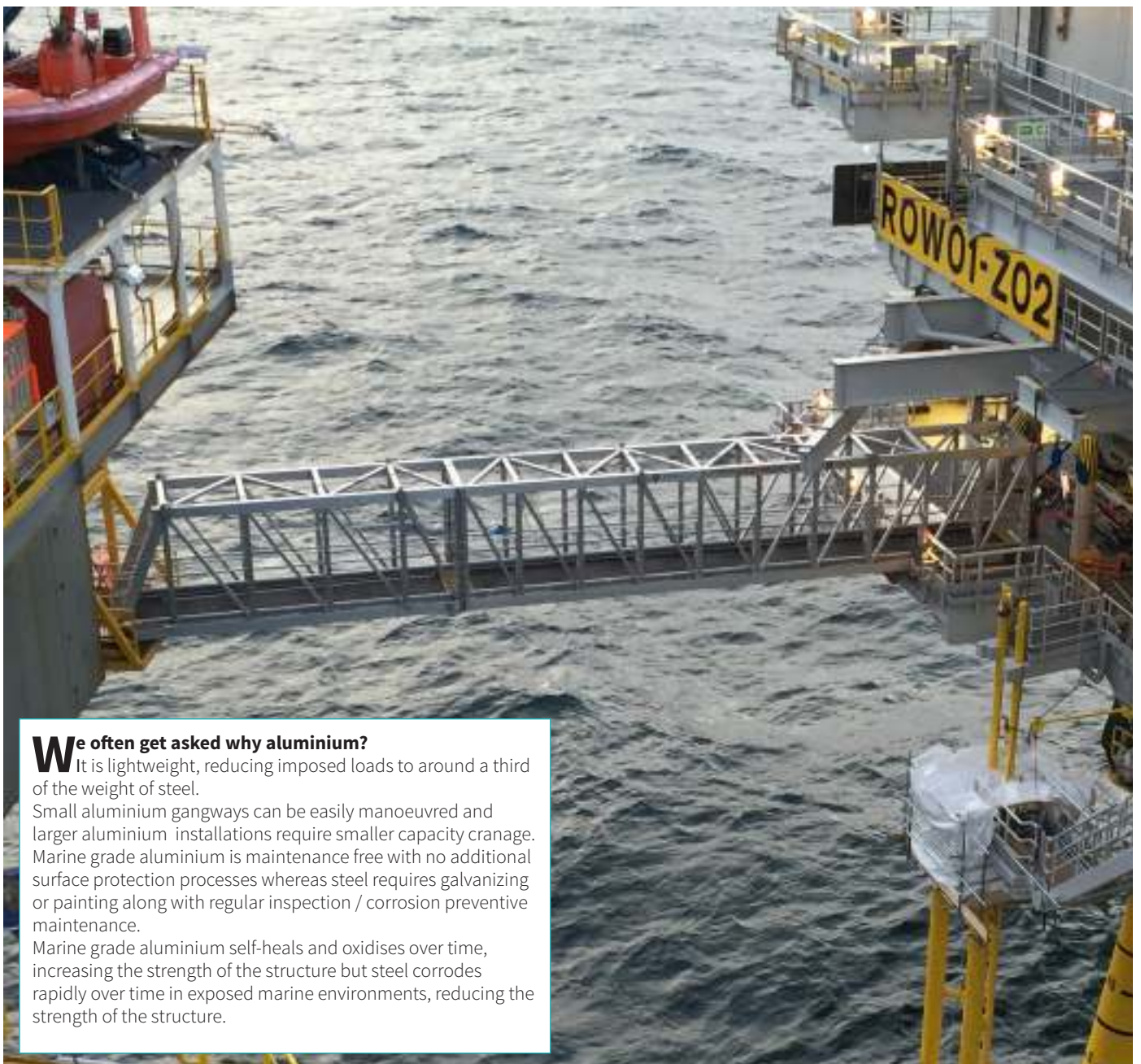
- Manufactured from Marine Grade Lightweight Aluminium 6082 T6
- Clear width to suit customer/ gangway requirement
- Up to 50m in length
- Overhead braced structure
- Anti-slip surface for maximum 10 degrees operating angle
- Fixed Handrail with half-height.
- Quay roller for tidal pontoon movement
- Lifting points for installation

### Optional Supply:

- Bespoke tower/ platform with access steps
- 0° to 50° working angle options
- Bearing pads (fixed and moving)
- Customer specific foundation connections
- Lighting, sprinkler system provisions for customer pipework, services, etc.
- Safety gates & RFID detection







**We often get asked why aluminium?**

It is lightweight, reducing imposed loads to around a third of the weight of steel.

Small aluminium gangways can be easily manoeuvred and larger aluminium installations require smaller capacity cranes. Marine grade aluminium is maintenance free with no additional surface protection processes whereas steel requires galvanizing or painting along with regular inspection / corrosion preventive maintenance.

Marine grade aluminium self-heals and oxidises over time, increasing the strength of the structure but steel corrodes rapidly over time in exposed marine environments, reducing the strength of the structure.



# Self-Levelling Stepped Gangways (Cruise Access)





## Specification

Custom design, aluminium gangway, 0-55 degrees working angle with length and width to suit customer requirements

### Standard supply:

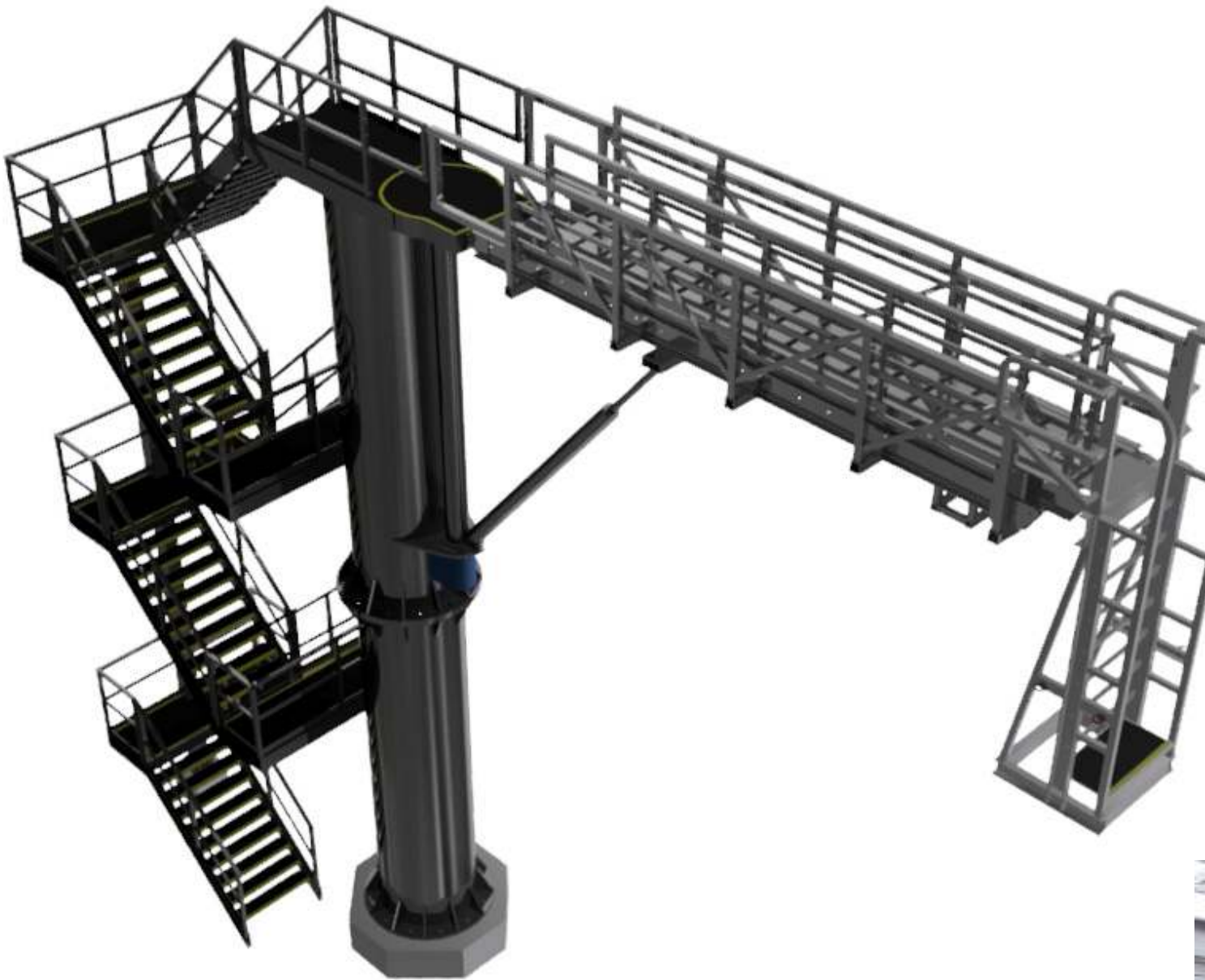
- Manufactured from Marine Grade Lightweight Aluminium 6082 T6
- Clear width to suit customer requirement
- Length to suit customer requirement
- Self-levelling tread step to maintain horizontal level
- Anti-slip surface
- 0° to 55° working angle options
- Mild steel quay trolley for access & ship hook
- Fixed handrail with half-height.
- Lifting lugs.

### Optional Supply:

- Disabled access ramps
- Ship hook connection to suit customer vessel
- Weather protection cover on length of gangway
- Customer specific printed weather protection
- Turntable top platform for vessel connection and minimal quay landing restraints
- Lighting, sprinkler system provisions for customer pipework, services, etc.
- Inclinerometers
- Platform towers for height restricted applications
- Automatic – hydraulic deployed systems



# Marine Column and Tower Gangways







## Specification

### Column Gangways

Column Gangways are used when the tanker height range can be achieved by pivoting a gangway up and down. The gangway can be telescopic and will park to the side of the column. The gangway can be raised and lowered by hydraulic cylinder or a crane mounted on top of the column. There are different arrangements for the access stairs, depending on the design of jetty and available space

The main advantages of Column Gangways are the small footprint coupled with a relatively low cost design. Manufacture and installation is a cost effective solution as the design is produced with the clients input and agreed prior to manufacture. Disadvantages of a Column Gangway are the exposed access staircase. Column Gangways need a larger working radius to achieve higher and lower angle deviations.

### Tower Gangways

Tower Gangways are used when the ship height range and tidal variation are too great for a fixed position column gangway. When the face of ship and jetty are very close and where the gangway does not have the luxury of extended length to achieve the high and low angles required.

Generally, Tower Gangways are hydraulically operated although a crane is sometimes used for gangway deployment.

The design allows for the gangway to be fitted to a vertical elevator system that carries the extending and rotating gangway up and down the face of the tower. The gangway can be ideally positioned and if the movement of the ship then causes the gangway to reach its maximum working angle, the elevator system will adjust the height of the base platform to the best optimum level. This is of course preceded by an alarm to prevent use while in motion.

Tower Gangways eliminate the risk of steep angle approach to the ship. This can be adjusted without issues during ship loading and unloading. The tower staircase is internal and consists of short flights which can be illuminated and deluged. The tower can be sited at the edge of the jetty to provide a shorter gangway lever moment and still reach all the ship levels. Towers can also double up as fire monitor towers.

Disadvantages of Tower Gangways are the higher cost compared to a column system and the weight needs to be designed into jetty structure.



### Standard supply:

- Gangway typically manufactured from Marine Grade Lightweight Aluminium 6082 T6
- Telescopic self-levelling gangway
- Anti-slip surface
- 0° to 55° working angle options
- Fixed Handrail with half-height.
- Bulwark ladder for access and egress
- 180° angular rotation
- Lifting points for installation or deployment

### Optional Supply:

- Bespoke tower/ platform/ pedestal with access options to suit customer application
- Customer specific foundation connections
- Hydraulic, electric or crane control options

# Dolphin Access Gangways



## Specification

Fixed bridge manufactured in Aluminium between marine Dolphins. Width and length are entirely at customer request. Supplied with foundation pads to secure both ends. 0-10 degrees working angle

### Standard supply:

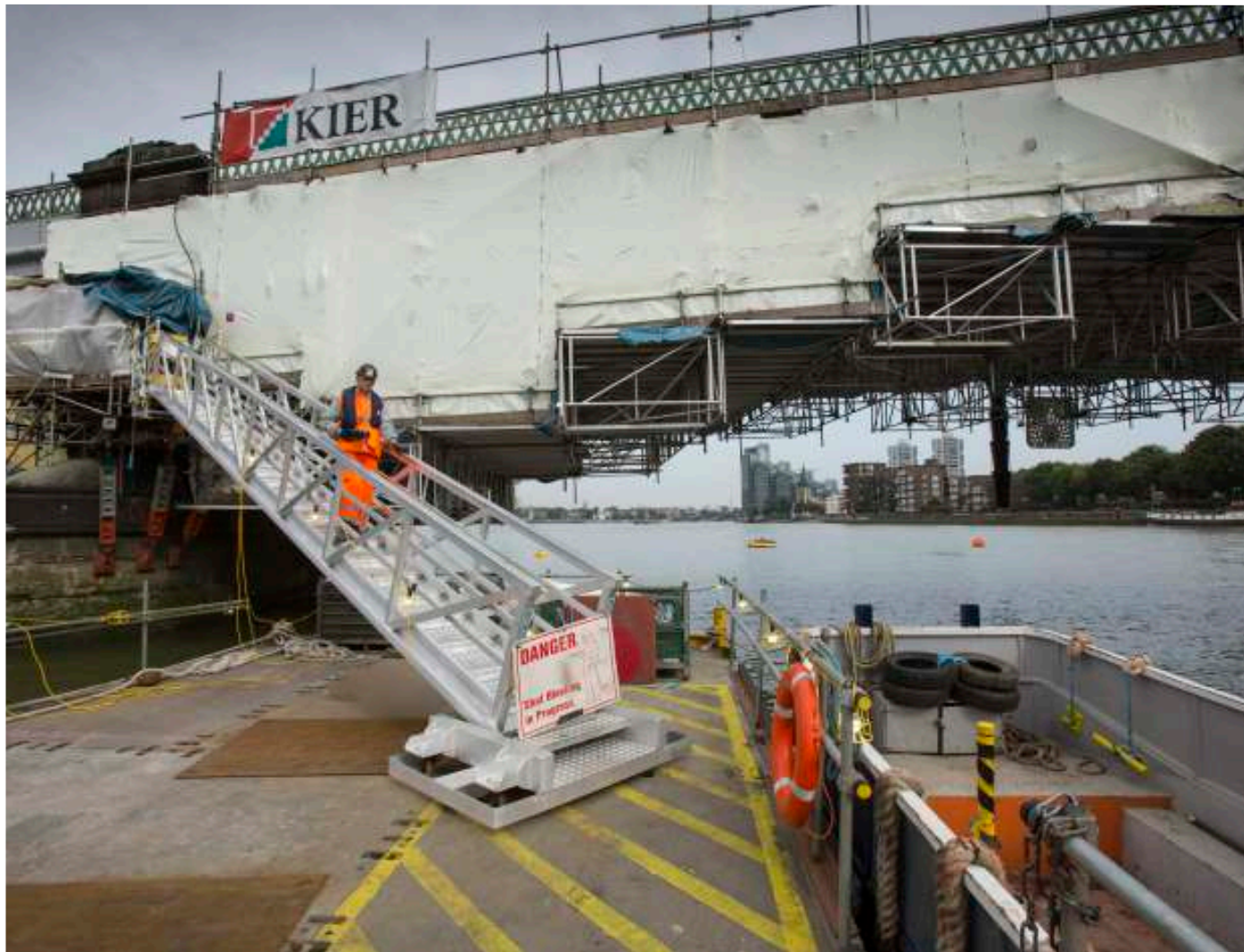
- Manufactured from Marine Grade Lightweight Aluminium 6082 T6
- Clear width to suit customer/ gangway requirement
- Foundation Pad fixings for securing to fixed foundations
- Anti-slip surface maximum 10° working angle.
- Fixed Handrail with half-height.
- Lifting points for installation

### Optional Supply:

- Bearing Pads (Fixed and Moving)
- Customer specific foundation connections
- Access ramps
- Tower/ platform with stairs for increased access heights.
- Lighting, sprinkler system provisions for customer pipework, services, etc.
- Cranked or hinged



# Pontoon Access Gangways



## Specification

Lightweight Aluminium walkway for access to floating pontoons. 0-50 degrees working angle options. Quay roller for variable tide heights

### Standard supply:

- Manufactured from Marine Grade Lightweight Aluminium 6082 T6
- Clear width to suit customer/ gangway requirement
- Anti-slip surface
- 0° to 50° working angle options
- Fixed Handrail with half-height.
- Fixed quay connection
- Quay roller for tidal pontoon movement
- Lifting points for installation

### Optional Supply:

- Bespoke tower/ platform with access steps at fixed end.
- Self-levelling treads
- Trolley replacing quay roller
- Disabled access ramps
- Slewing beam
- Lighting, sprinkler system provisions for customer pipework, services, etc.
- Cranked or hinged





## Specification

Very specialised access system to provide man access into the cable carousels on a ship. These systems incorporate modular bridges fitted with custom accommodation ladders to get the operator onto the deck inside the carousel.

### Standard supply:

- Manufactured from Marine Grade Lightweight Aluminium 6082 T6
- Clear width to suit customer/ gangway requirement
- Access & egress options to suit customer requirement
- Overhead braced structure
- Fixed position 0° to 55° working angle 600mm wide gangways for access inside the Carousel
- Anti-slip surface
- Fixed handrail with half-height.
- Lifting points for installation

### Optional Supply:

- Lighting, sprinkler system provisions for customer pipework, services, etc.
- Safety gates & RFID detection
- Electric, hydraulic & crane deployed gangways
- Access & egress options to suit customer requirement
- Switches, limits and proximity sensors







# Accommodation Ladders



## Specification

Long range Curved or self-levelling step. For fixing to ships. Lightweight aluminium ladders with narrow width for easy ship-shore access. Supplied with turntable and stowing system. Non-standard gangway equipment can be designed to suit existing stowage arrangements if required.

### Standard supply:

- Manufactured in accordance with ISO5488/ BSMA89
- Ladder Manufactured from Marine Grade Lightweight Aluminium 6082 T6
- 600mm clear width
- 4m to 30m length options (Type Approved to 20m)
- Anti-slip surface (curved Step).
- 0° to 55° working angle options
- Mild steel stowing equipment & turntable top platform
- Horizontal stowing system
- Electric winch to ISO 7364
- Self-locking stanchions and polypropylene rope hand rail & half-height
- Lifting lugs.

### Optional Supply:

- Fixed or folding handrails
- Hydraulic/pneumatic winch stowing system for deploy & recovery.
- Ladder replacement to suit customers existing stowing equipment.
- Self-Levelling tread.
- Telescopic accommodation ladder
- Stowing coffin







## Specification

Lightweight aluminium gangways with cranked/hinge section for access to ships below the quay. 0-50 degrees working angle

### Standard supply:

- Manufactured from Marine Grade Lightweight Aluminium 6082 T6
- Clear width to suit customer requirement
- Length options to suit customer requirement
- Anti-slip surface.
- 0° to 50° working angle options
- Ship Hook & quay roller
- Fixed handrail with half-height.
- Lifting & lashing lugs.

### Optional Supply:

- Self-levelling tread
- Electric/hydraulic raising & lowering
- Fixed/ adjustable crank options
- Platforms & stairs for vessel access
- Quay roller options to suit site availability (wheels, trolley, bespoke, etc.)
- Rubber fender pads
- Mesh/sheet side panels
- Lighting, sprinkler system provisions for customer pipework, services, etc.
- Safety gates & RFID detection.

# Shore Type A



## Specification

Long range, steep 0-50 degrees working angle, aluminium gangways for easy ship-shore access with standard ship hook and jetty roller

### Standard supply:

- Manufactured in accordance with ISO 7061
- Manufactured from Marine Grade Lightweight Aluminium 6082 T6
- 600mm clear width
- 12m to 30m length options (DNV-GL Type approved up to 27m)
- Anti-slip surface.
- 0° to 50° working angle options
- Standard ship hook & quay roller
- Self-locking stanchions and polypropylene rope hand rail & half-height
- Lifting & lashing lugs.

### Optional Supply:

- Jointed for reduced storage length
- Ship hook options to suit vessel type
- Quay roller options to suit (wheels, trolley, bespoke, etc.)
- Fixed or folding handrails
- Safety net
- Turn table top platform
- End access ramps
- Centre transport wheels
- Third party witness load test
- In-house load test & C of C





# Type C Gangways



## Specification

Short range, steep 0-55 degrees working angle, lightweight aluminium gangways with narrow width for easy ship-shore access with standard ship hook and jetty roller

### Standard supply:

- Manufactured in accordance with BSMA78
- Manufactured from Marine Grade Lightweight Aluminium 6082 T6
- 460mm clear width
- 1m to 9m length options
- Anti-slip surface.
- 0° to 50° working angle options
- Standard ship hook & quay roller
- Self-locking stanchions and polypropylene rope hand rail & half-height
- Lifting & lashing lugs.

### Optional Supply:

- Ship hook options to suit vessel type
- Quay roller options to suit site availability (wheels, trolley, bespoke, etc.)
- Fixed or folding Handrails
- Turn table top platform

# SHALA Gangways - Shallow Angle Lightweight Aluminium



**Available  
for  
purchase  
or hire**

## Specification

Short range, shallow 0-30 degrees working angle, lightweight aluminium gangways for easy ship-shore access with standard ship hook and jetty roller

### Standard supply:

- Manufactured in accordance with ISO 7061
- Manufactured from Marine Grade Lightweight Aluminium 6082 T6
- 600mm clear width
- 2m to 12m length options DNV-GL Type approved
- Anti-slip surface.
- 0° to 30° working angle options
- Standard ship hook & quay roller
- Self-locking stanchions and polypropylene rope hand rail & half-height
- Lifting & lashing lugs.

### Optional Supply:

- Ship hook, swivel yoke options to suit vessel type
- Quay roller options to suit site availability (wheels, trolley, bespoke, etc.)
- Fixed or folding Handrails
- Turn table top platform
- Centre transport wheels
- Third party witness load test
- In-house load test & C of C





# SALA Gangways - Steep Angle Lightweight Aluminium



## Specification

Short range, steep 0-50 degrees working angle, lightweight aluminium gangways for easy ship-shore access with standard ship hook and jetty roller

### Standard supply:

- Manufactured in accordance with ISO 7061
- Manufactured from Marine Grade Lightweight Aluminium 6082 T6
- 600mm clear width
- 2m to 12m length options DNV-GL Type approved
- Anti-slip surface.
- 0° to 50° working angle options
- Standard ship hook & quay roller
- Self-locking stanchions and polypropylene rope hand rail & half-height
- Lifting & lashing lugs.

### Optional Supply:

- Ship hook options to suit vessel type
- Quay roller options to suit site availability (wheels, trolley, bespoke, etc)
- Fixed or folding handrails
- Turn table top platform
- Centre transport wheels
- Third party witness load test
- In-house load test & C of C



## Specification

### Bulwark Ladders

#### Standard supply:

- Manufactured from Marine Grade Lightweight Aluminium 6082 T6
- Clear width to suit customer/ gangway requirement
- Manufactured to ease ship access heights
- Vessel hooks for securing
- Anti-slip surface.
- Lifting lugs.
- Adjustable height
- Adjustable hook

#### Optional Supply:

- Folding bulwark
- Jack up wheels for ease of movement
- Lug & pin connection to gangway for small landing areas





## Options include:

- **Safety Nets** – Installed where there is a risk of falls between the ship & quayside. Available in various lengths & widths. Manufactured from machine made knotless 100mm mesh netting to BS EN 1263-1.
- **Side Nets** – Installed where there is a risk of falls from the means of embarkation and disembarkation. Manufactured from machine made knotless 100mm mesh netting to BS EN 1263-1
- **Ladder Joints** – Joints can be fitted to ladders to increase the overall working height of the ladder whilst reducing the storage space available.
- **Gangway Joints** – Joints can be fitted to the gangways to reduce storage space or in certain circumstances transport restrictions. These can be hinge & pin or bolted depending upon the customer requirement.
- **Turn Table Top Platform** – Allows the gangway to rotate from the vessel, reducing floor space or landing areas where there is restricted quay access. The top platforms can also extend out from the vessel reducing stowage.
- **Self-Stowing Gear** – Allows a gangway to be retracted and stowed in a minimal window for limited vessel storage space requirements.
- **Stanchions** – Replacement handrail stanchions.
- **Fixed Handrails** – Replacing the standard rope & stanchion configuration, rigid handrails are fixed in position on the gangway. Manufactured from Marine Grade Aluminium bar.
- **Folding Handrails** – Reduce the overall storage space of the gangway when not in use. Folding on to the gangway when not in use and with fixed locking when the gangway is deployed. Manufactured from Marine Grade Aluminium bar.



## Specification

Complete custom design of items and fabrications to suit particular customer needs. Cruise liner access, painting raft, custom ladders etc.

Bespoke Aluminium and Steel fabrications to customer designs or concepts.

In-house design & verification team

All design, manufacturing and testing can be carried out at Tyne Gangway

### Projects Include:

- Pilot platforms
- Painting stages
- Painting cages
- Counterbalanced paint cradles
- Paint rafts
- Rope pilot ladders
- Mediterranean ladders
- Rung ladders
- Pilot ladders
- Material lifting baskets





## Other Companies in the Benbecula Group:

---



**Lift-Rite Engineering Services Ltd**  
Load and Testing Services, Rigging and  
Mobilisation

+44 (0) 191 234 3366  
sales@lift-rite.com  
www.lift-rite.com



**TyneTec Engineering Ltd**  
Engineering Consultants

+44 (0) 191 917 5713  
info@tynetecengineering.com  
www.tynetecengineering.com



**Cylinder Service Centre Ltd**  
Hydraulic Cylinder Design and Manufacture

+44 (0) 191 416 6288  
enquiries@cylinder.co.uk  
www.cylinder.co.uk



**TELESCOPIC GANGWAYS & WIND  
TURBINE ACCESS**



**MARINE TOWER GANGWAYS**



**SELF-LEVELLING STEPPED  
GANGWAYS**



**MODULAR GANGWAYS**



**DOLPHIN ACCESS GANGWAYS**



**BESPOKE PRODUCTS**



**PONTOON ACCESS GANGWAYS**



**CAROUSEL ACCESS SYSTEMS**



**NAVAL BROWS**



**SHORE GANGWAYS TYPE A**



**ACCOMMODATION LADDERS**



**ONSHORE GANGWAYS & BRIDGES**



**SHALA GANGWAYS**



**SALA GANGWAYS**



**TYPE C GANGWAYS**



**BULWARK LADDERS**

Established in 1934, Tyne Gangway has gained an enviable reputation for innovative and quality gangway design and manufacturing techniques along with superb customer service.

The company specialises in design and manufacture of aluminium gangways, shore based pedestrian access equipment and special structures and has a worldwide customer base in the oil & gas, energy, marine and shipping sectors. Their standard range of ship access equipment, ladders and gangways are all approved by the major classification and regulatory bodies. Tyne Gangway is a recognised Germanischer Lloyd welding shop.

As well as the products shown above, Tyne Gangway also supply accessories such as safety and side nets; ladder and gangway joints; turntable top platforms; self-stowing gear; stanchions and fixed or folding handrails.

Repair of existing accommodation ladders is a particularly economic solution for clients as Tyne Gangway are able to adapt their own in-house designed extrusions to replace existing profiles. The company offers annual and five year servicing in accordance with the latest international standards and SOLAS regulations.



Benbecula Group - Walker Site, Wincomblee Road, Walker,  
Newcastle upon Tyne, NE6 3QS, United Kingdom

Tel: +44 (0)191 262 3657

Email: [info@tynegangway.com](mailto:info@tynegangway.com) Website: [www.tynegangway.com](http://www.tynegangway.com)